

STORAGE NOT REQUIRED

Expected hours of work: Monday - Saturday, with the following exceptions:

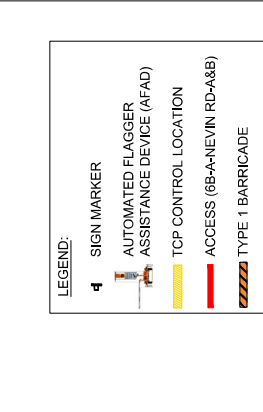
- Oversize deliveries that must take place at night
- Narrow environmental / regulatory windows. A noise exemption permit will be required.

Disturbance to adjacent areas

- Disturbance to adjacent areas
- Disturbance to adjacent areas

Night work traffic control provisions

- A portable dynamic message sign (PDMS) is required for night work operations on paved roads. The message displayed on the PDMS will alert motorists to the work activities occurring ahead (e.g., flagger operation).



TITLE: TRAFFIC CONTROL LAYOUT
AP 6B-A-NEVIN RD-A&B
BPLP TMEP SPREAD 6B

DESIGNED: DRAWN: CK CK
CHECKED: KM KM
APPROVED: KM KM

DESIGN SPEED: 50 km/h

PROJECT NO.: 3431.B01
DRAWING NO.: 6B-A-NEVIN-A&B_P2

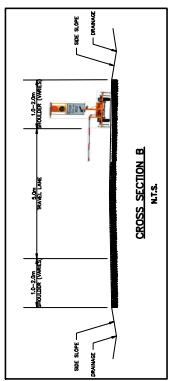
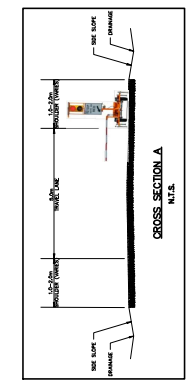
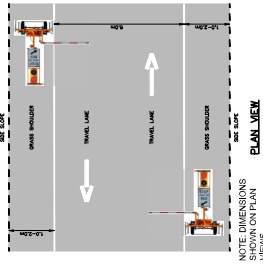
DATE: FEB 02, 2023
REVISION: 0

WATT Consulting Group
Calgary, Edmonton, Lloydminster,
Okanagan, Vancouver, Victoria
WATTCONSULTINGGROUP.COM



REVISIONS

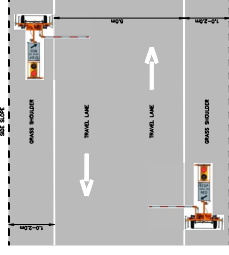
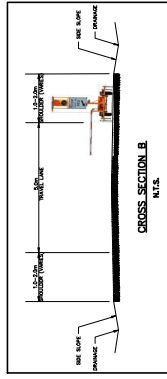
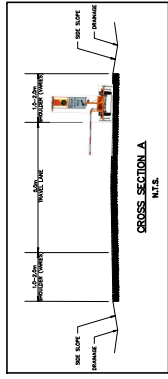
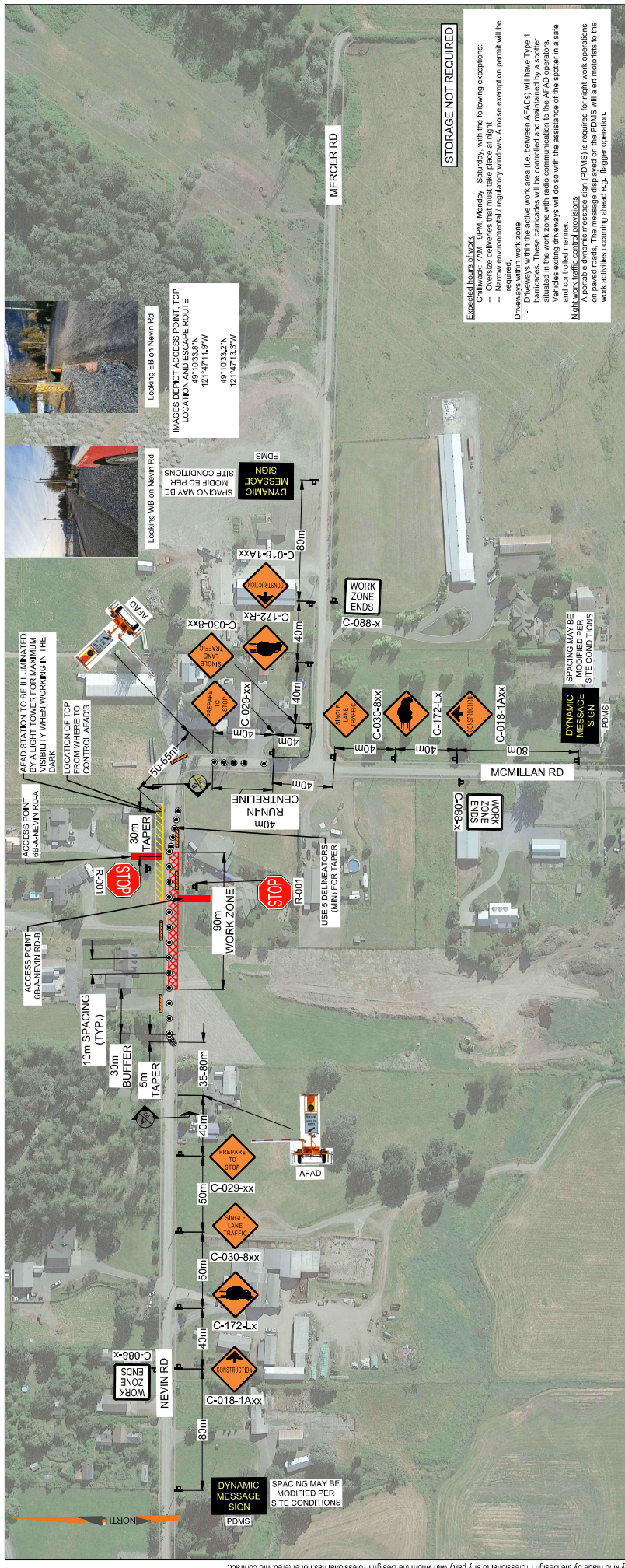
ISSUED FOR IMPLEMENTATION	DATE
0	FEB 02-23



SEAL:

PERMIT TO PRACTICE
WATT CONSULTING GROUP LTD
SIGNATURE _____
DATE _____

PERMIT NUMBER: 1001432
ENGINEERS & GEOSCIENTISTS
BRITISH COLUMBIA



LEGEND:

- SIGN MARKER
- AUTOMATED FLAGGER ASSISTANCE DEVICE (AFAD)
- TCP CONTROL LOCATION
- ACCESS (6B-A-NEVIN RD-A&B)
- WORK ZONE
- TYPE 1 BARRICADE

PERMIT TO PRACTICE
 WATT CONSULTING GROUP LTD
 SIGNATURE _____
 DATE: _____

PERMIT NUMBER: 1001432
 ENGINEERS & GEOSCIENTISTS
 BRITISH COLUMBIA

SEAL:

REVISIONS

0	ISSUED FOR IMPLEMENTATION	FEB 02-23
1		
2		
3		
4		
5		
6		
7		
8		

DESIGNED: DRAWN: CK CK
CHECKED: KM KM
APPROVED: KM KM

DESIGN SPEED: 50 km/h

DESIGN VEHICLE:

PROJECT NO.: 3431.B01
DRAWING NO.: 6B-A-NEVIN-A&B-SLAT_P2

DATE: FEB 02, 2023
REVISION: 0

TITLE: TRAFFIC CONTROL LAYOUT
 AP 6B-A-NEVIN RD-A&B-SLAT
 BPLP TMEP SPREAD 6B

WATT Consulting Group
 Calgary, Edmonton, Lloydminster,
 Okanagan, Vancouver, Victoria
WATTCONSULTINGGROUP.COM

Looking EB on Nevin Rd
 IMAGES DEPICT ACCESS POINT, TCP LOCATION AND ESCAPE ROUTE
 49°10'33.2"N
 121°47'11.57"W
 49°10'33.2"N
 121°47'13.37"W

Looking WB on Nevin Rd
 SPACING MAY BE MODIFIED PER SITE CONDITIONS
 DYNAMIC MESSAGE SIGN

AFAD STATION TO BE ILLUMINATED BY LIGHT TOWER FOR NIGHTTIME VISIBILITY WHEN WORKING IN THE DARK
 LOCATION OF TCP FROM WHERE TO FROM WHERE TO FROM WHERE TO FROM WHERE TO
 CONTROL AFADs

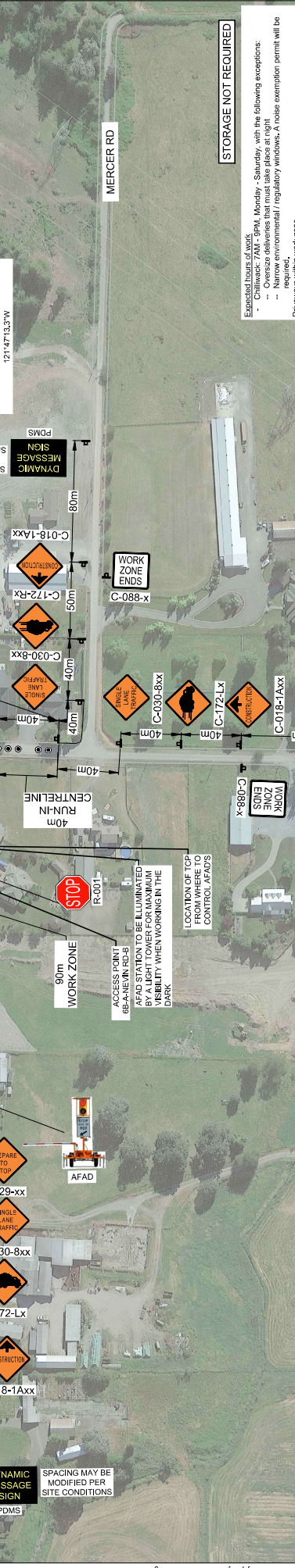
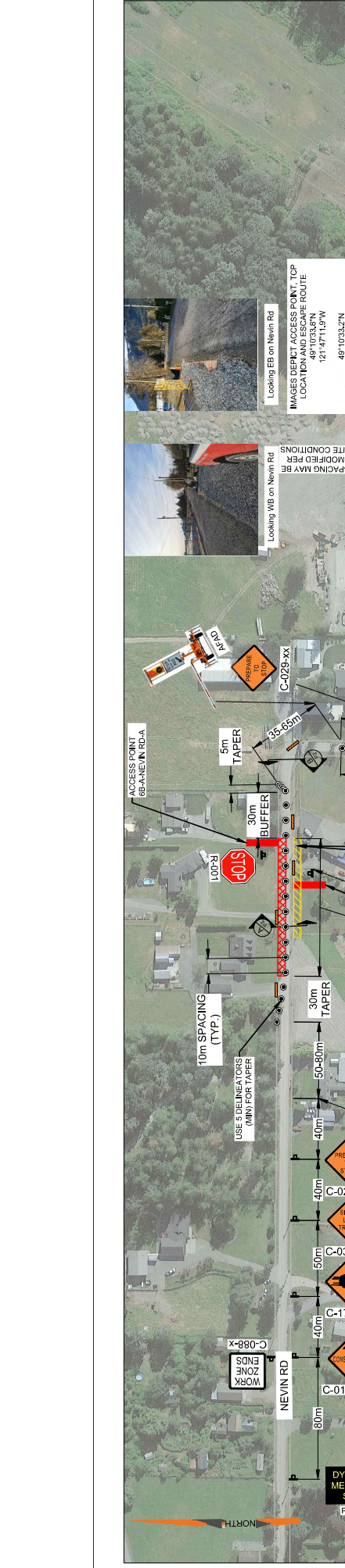
ACCESS POINT 6B-A-NEVIN RD-A
 ACCESS POINT 6B-A-NEVIN RD-B
 30m TAPER
 50m TAPER
 10m SPACING (TYP.)

WORK ZONE ENDS
 WORK ZONE ENDS
 WORK ZONE ENDS
 WORK ZONE ENDS

C-018-1Axx
 C-172-Lx
 C-030-8xx
 C-029-xx

C-018-1Axx
 C-172-Lx
 C-030-8xx
 C-029-xx

DYNAMIC MESSAGE SIGN
 SPACING MAY BE MODIFIED PER SITE CONDITIONS



LEGEND:

- SIGN MARKER
- 🚧 AUTOMATED FLAGGER ASSISTANCE DEVICE (AFAD)
- 🚧 TCP CONTROL LOCATION
- ⚡ ACCESS (6B-A-NEVIN RD-A&B)
- ██ WORK ZONE
- ██ TYPE 1 BARRIcade

STORAGE NOT REQUIRED

- Expected hours of work: Monday - Saturday, with the following exceptions:
 - Overseas deliveries that must take place at night
 - Narrow environmental / regulatory windows. A noise exemption permit will be required.
- Disturbance to residents or businesses will be minimized.
- Drivers will be notified with the use of AFAD.
- These barricades will be controlled and maintained by a spotter situated in the work zone with radio communication to the AFAD operators. Vehicles exiting driveways will do so with the assistance of the spotter in a safe manner.
- A portable dynamic message sign (PDMS) is required for night work operations on paved roads. The message displayed on the PDMS will alert motorists to the work activities occurring ahead (e.g., flagger operation).

IMAGES DEPICT ACCESS POINT, TCP LOCATION AND ESCAPE ROUTE
 48°10'33.27N
 121°47'14.97W
 48°10'33.27N
 121°47'14.97W

SPACING MAY BE MODIFIED PER SITE CONDITIONS
 DYNAMIC MESSAGE SIGN
 PDMS

REPAIR TO STOP
 SINGLE LANE TRAFFIC
 C-029-xx
 C-030-8xx
 C-172-Lx
 C-018-1Axx

WORK ZONE ENDS
 C-088-X
 C-018-1Axx
 C-172-Lx
 C-030-8xx
 C-029-xx
 C-018-1Axx

ACCESS POINT 6B-A-NEVIN RD-B
 STOP
 R-001
 AFAD

ACCESS POINT 6B-A-NEVIN RD-A
 STOP
 R-002

WORK ZONE ENDS
 C-088-X
 C-018-1Axx
 C-172-Lx
 C-030-8xx
 C-029-xx
 C-018-1Axx

DYNAMIC MESSAGE SIGN
 PDMS
 SPACING MAY BE MODIFIED PER SITE CONDITIONS

USE OF DIMENSION LINES (MIN) FOR TAPER
 10m SPACING (TYP.)

30m TAPER
 40m BUFFER

REPAIR TO STOP
 SINGLE LANE TRAFFIC
 C-029-xx
 C-030-8xx
 C-172-Lx
 C-018-1Axx

WORK ZONE ENDS
 C-088-X
 C-018-1Axx
 C-172-Lx
 C-030-8xx
 C-029-xx
 C-018-1Axx

ACCESS POINT 6B-A-NEVIN RD-B
 STOP
 R-001
 AFAD

ACCESS POINT 6B-A-NEVIN RD-A
 STOP
 R-002

WORK ZONE ENDS
 C-088-X
 C-018-1Axx
 C-172-Lx
 C-030-8xx
 C-029-xx
 C-018-1Axx

DYNAMIC MESSAGE SIGN
 PDMS
 SPACING MAY BE MODIFIED PER SITE CONDITIONS

LOOKING WB ON NEVIN RD

LOOKING EB ON NEVIN RD

LOOKING WB ON NEVIN RD

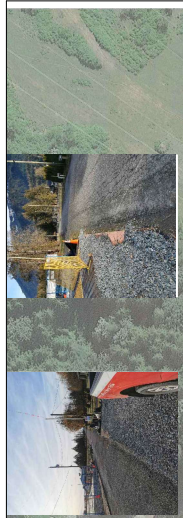
LOOKING EB ON NEVIN RD

TRAFFIC CONTROL LAYOUT
AP 6B-A-NEVIN RD-A&B-SLAT
BPLP TMEP SPREAD 6B

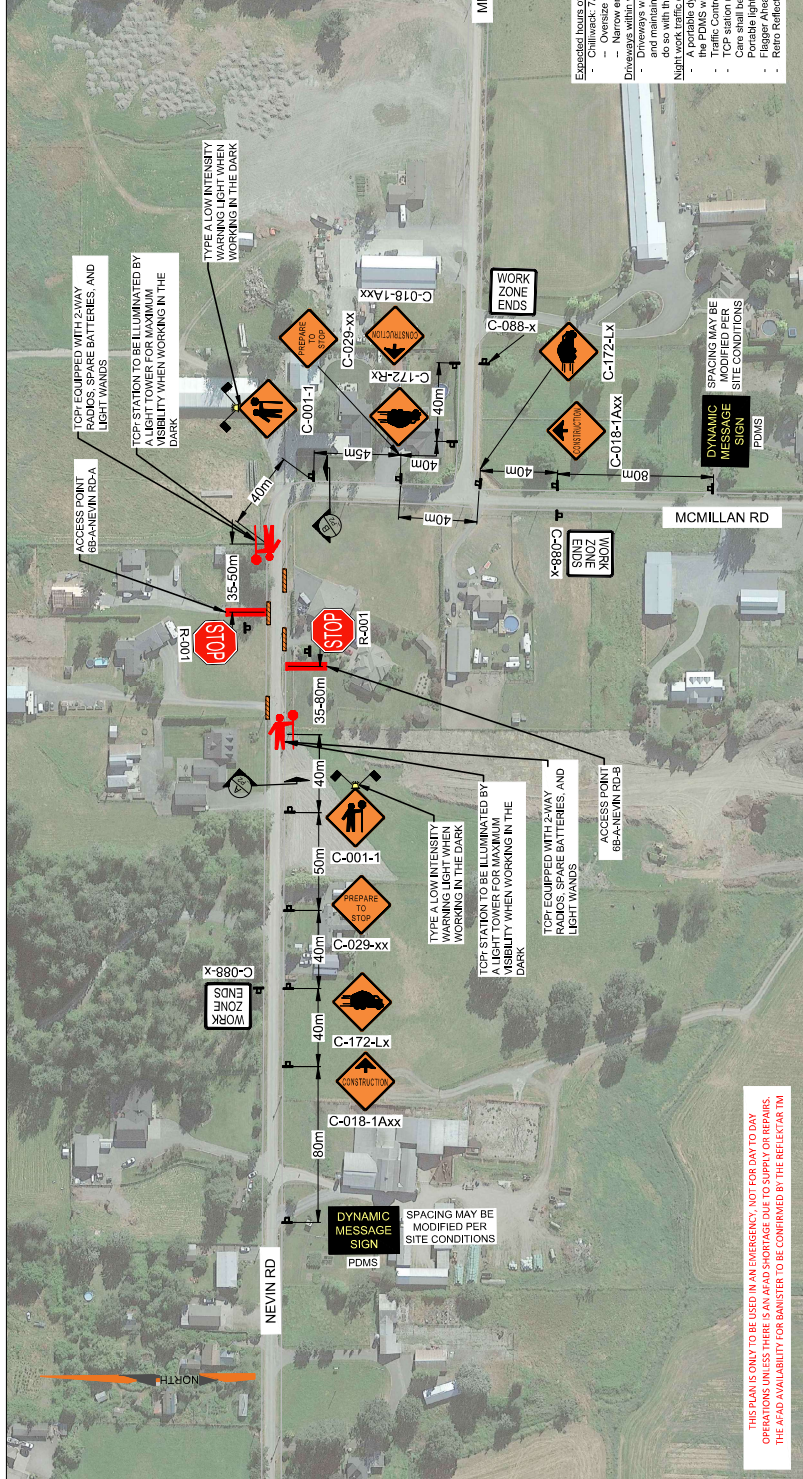
DESIGNED:	DRAWN:	CHECKED:	APPROVED:
CK	CK	KM	KM
DESIGN VEHICLE:	DESIGN SPEED:	PROJECT NO.:	DRAWING NO.:
50 km/h	80 km/h	3431.B01	6B-A-NEVIN-SLAT_P3
DATE:	REVISION:		
FEB 02, 2023	0		

<p>SEAL:</p> <p>PERMIT TO PRACTICE WATT CONSULTING GROUP LTD</p> <p>SIGNATURE: _____ DATE: _____ PERMIT NUMBER: 1001432 ENGINEERS & GEOSCIENTISTS BRITISH COLUMBIA</p>	<p>0 ISSUED FOR IMPLEMENTATION 1 FEB 02-23 2 3 4 5 6 7 8</p> <p>REVISIONS</p> <p>0 ISSUED FOR IMPLEMENTATION 1 FEB 02-23 2 3 4 5 6 7 8</p> <p>DESIGNED: DRAWN: CHECKED: APPROVED:</p> <p>CK CK KM KM</p> <p>DESIGN VEHICLE: DESIGN SPEED:</p> <p>80 km/h 80 km/h</p> <p>PROJECT NO.: DRAWING NO.:</p> <p>3431.B01 6B-A-NEVIN-SLAT_P3</p> <p>DATE: REVISION:</p> <p>FEB 02, 2023 0</p>
--	---

WATT Consulting Group
 Calgary, Edmonton, Lloydminster,
 Okanagan, Vancouver, Victoria
WATT CONSULTING GROUP.COM

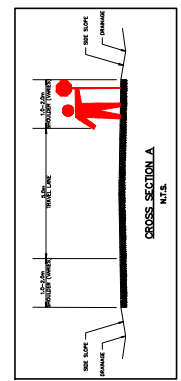
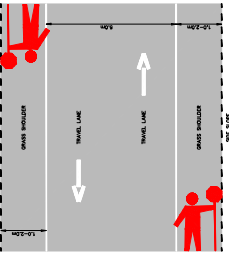


IMAGES DEMONSTRATE ACCESS POINT, TCP LOCATION AND ACCESS ROUTE
 48°10'33.8"N
 121°47'11.8"W
 48°10'33.2"N
 121°47'13.2"W

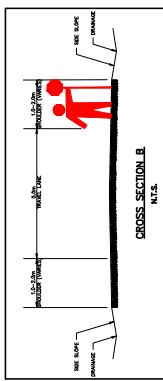


STORAGE NOT REQUIRED

- Expected hours of work
 - Challenged: 7AM - 8PM, Monday - Saturday, with the following exceptions:
 - Oversize deliveries that must take place at night
 - Driveways within the active work area (i.e. between TCPs) will have Type 1 barricades. These barricades will be controlled and maintained by a spotter situated in the work zone with radio communication to the TCPs. Vehicles exiting driveways will NOT be subject to the control of the spotter in a safe and controlled manner.
- Notes:
 - A portable dynamic message sign (PDMS) is required for night work operations on paved roads. The message displayed on the PDMS will alert motorists to the work activities occurring ahead e.g., flagger operation.
 - TCPs shall be equipped with two-way radios, spare batteries, and light wands.
 - Care shall be taken when adjusting the orientation of the light heads to ensure lights are not causing glare for motorists.
 - Portable light towers shall be used in nighttime situations regardless of the availability of ambient lighting e.g., luminaires.
 - Flagger Ahead Signage shall have flags replaced with Type A Low Intensity Flashing Warning Lights.
 - Retro Reflective sheeting on both dimensions and signage shall be in good condition to ensure effectiveness at night.



NOTE DIMENSIONS SHOWN ARE SITE SPECIFIC



NOTE DIMENSIONS SHOWN ARE SITE SPECIFIC

LEGEND:

- SIGN MARKER
- TCP CONTROL LOCATION
- ACCESS (6B-A-NEVIN RD-A&B)
- TYPE 1 BARRICADE

SEAL:

PERMIT TO PRACTICE
 WATT CONSULTING GROUP LTD
 SIGNATURE _____
 DATE _____
 PERMIT NUMBER: 1001432
 ENGINEERS & GEOSCIENTISTS
 BRITISH COLUMBIA

ISSUED FOR IMPLEMENTATION	REVISIONS	DATE
0	ISSUED FOR IMPLEMENTATION	FEB 02-23
1		
2		
3		
4		
5		
6		
7		
8		

TITLE: TRAFFIC CONTROL LAYOUT
 AP 6B-A-NEVIN RD-A&B-TCP1
 BPLP TMEP SPREAD 6B

DESIGNED: DRAWN: CHECKED: APRVD:
 CK CK CK CK
 DESIGN SPEED: 50 km/h
 PROJECT NO: 3431.B01
 DRAWING NO: 6B-A-NEVIN-A&B-TCP1-P2
 DATE: FEB 02, 2023
 REVISION: 0

WATT Consulting Group
 Calgary, Edmonton, Lloydminster,
 Okanagan, Vancouver, Victoria
 WATTCONSULTINGGROUP.COM